

OFFICE OF ACADEMIC AFFAIRS | ORGANIZATIONAL CHART

RED NAME DENOTES ACADEMIC CABINET MEMBER



JANN JOSEPH

Executive Vice Chancellor
for Academic Affairs

VICE CHANCELLOR



MONICA PORTER
Vice Chancellor for
Student Engagement and
Success

ASSOCIATE VICE CHANCELLOR



LINDA CHEN
Associate Vice Chancellor
for Academic Affairs; Dean
of Undergraduate Studies



NEOVI KARAKATSANIS
Director, Honors Program



LISA ZWICKER
Director, International
Programs

ASSOCIATE VICE CHANCELLOR

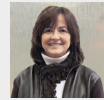


DOUG MCMILLEN
Associate Vice Chancellor
for Academic Affairs



TERESA SHEPPARD
Campus Bulletin
Coordinator

ASSOCIATE VICE CHANCELLOR



CATHY BUCKMAN
Associate Vice Chancellor

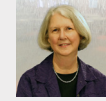


SHAUNE THOMPSON
ABC Transfer Specialist

ACADEMIC AFFAIRS



MARIANNE CASTANO-BISHOP
Director, Center for Online
Education



GWYNN METTETAL
Director, University Center for
Excellence in Teaching (UCET)



ERIKA ZYENDA
Contracts & Grants
Coordinator



BINIAM TEFAMARIAM
Institutional Research and
Effectiveness Officer

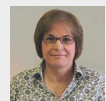


XIAOXU SHAN
Institutional Research
Analyst

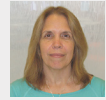
OFFICE OF ACADEMIC AFFAIRS



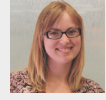
THERESA HEFFNER
Manager, Office of
Academic Affairs



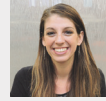
ANNE RICHMOND
Academic Records
Coordinator



LEE SCOTT-GREEN
Exec Secretary to the
Exec Vice Chancellor



LYDIA TURNER
Academic Records
Assistant & Secretary



JESSICA HALE
Secretary

DEANS



MARVIN CURTIS
Dean, Ernestine M. Raclin
School of the Arts



RICK KOLBE
Dean, Judd Leighton School
Business & Economics



HOPE SMITH DAVIS
Interim Dean,
School of Education



THOMAS FISHER
Dean, Vera Z. Dwyer
College of Health Sciences



ELIZABETH DUNN
Dean, College of
Liberal Arts and Sciences



VICKI BLOOM
Dean, Library Services



CAROL RIPPEY MASSAT
Director, Social Work
IU School of Social Work

OFFICE OF THE REGISTRAR



KEITH DAWSON
Registrar

ASSESSMENT COMMITTEE



SUSAN CRESS
Campus Assessment
Coordinator

ACADEMIC SENATE



KEN SMITH
President,
Academic Senate